

# 5 Bowbeer Rd Oakville, ON

**Total Above Grade Exterior ft<sup>2</sup>**

Approx Above Ground Exterior Area = 2749.77 ft<sup>2</sup>

**Total Exterior ft<sup>2</sup>**

Approx Exterior Area (basement included) = 4439.70 ft<sup>2</sup>



## Ground Floor (above grade)



Approx Interior Area = 1529.9 ft<sup>2</sup>

Approx Exterior Area = 1676.8 ft<sup>2</sup>



5 Bowbeer Rd  
Oakville, ON

**Total Above Grade Exterior ft<sup>2</sup>**

Approx Above Ground Exterior Area = 2749.77 ft<sup>2</sup>

**Total Exterior ft<sup>2</sup>**

Approx Exterior Area (basement included) = 4439.70 ft<sup>2</sup>

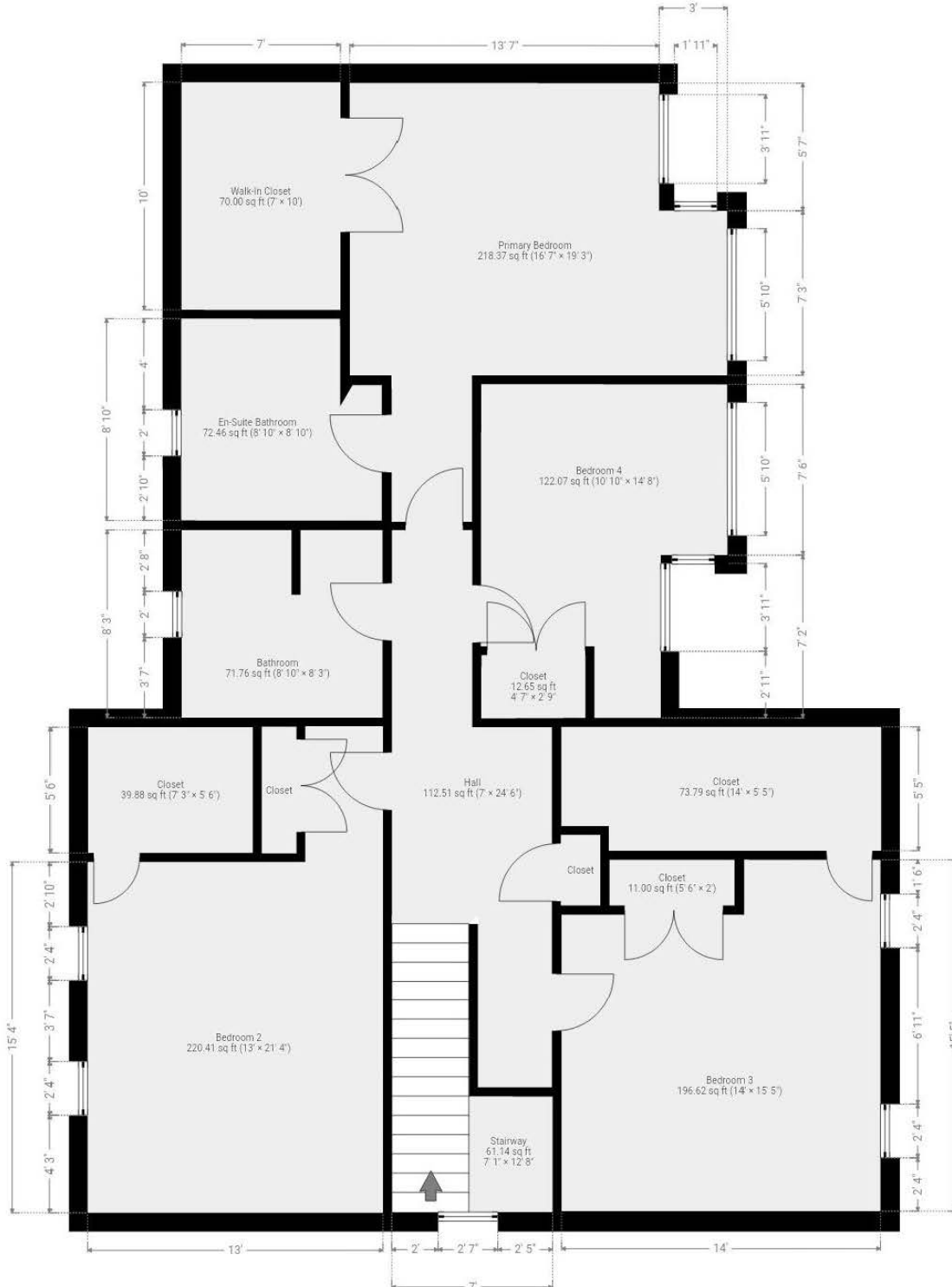


**2nd Floor**  
(above grade)



Approx Interior Area = 1379.3 ft<sup>2</sup>

Approx Exterior Area = 1525.3 ft<sup>2</sup>



All room dimensions and floor areas must be considered approximate and are subject to independent verification.

Lidar iScan by [VOGELcreative.com](http://VOGELcreative.com)



# 5 Bowbeer Rd Oakville, ON

**Total Above Grade Exterior ft<sup>2</sup>**

Approx Above Ground Exterior Area = 2749.77 ft<sup>2</sup>

**Total Exterior ft<sup>2</sup>**

Approx Exterior Area (basement included) = 4439.70 ft<sup>2</sup>



**Basement  
(below grade)**



Approx Interior Area = 1530.4 ft<sup>2</sup>

Approx Exterior Area = 1689.9 ft<sup>2</sup>

