

KIMBERLY PHINNEY

CEO/ President/ Sales Representative

416.562.3777

1.877.822.6900

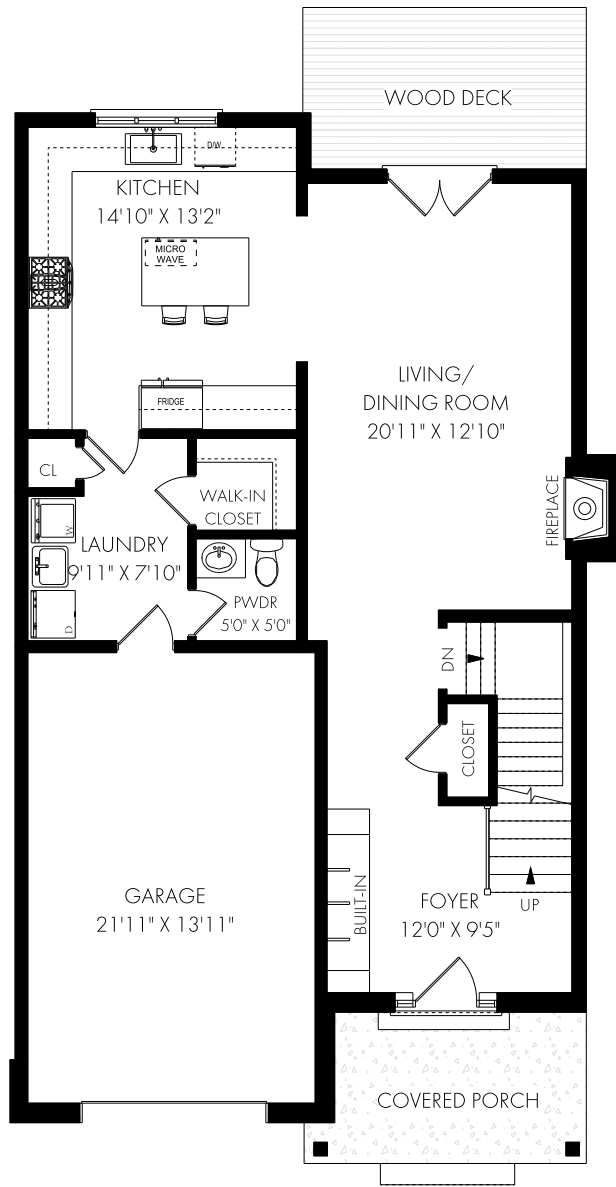
PHINNEYREALESTATE.COM



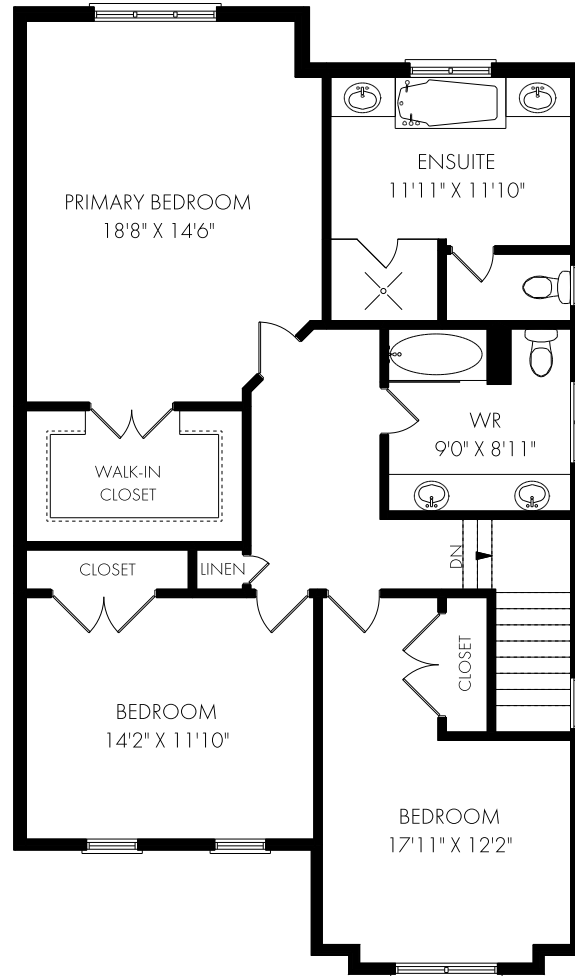
PHINNEY
REAL ESTATE

FLOOR PLANS

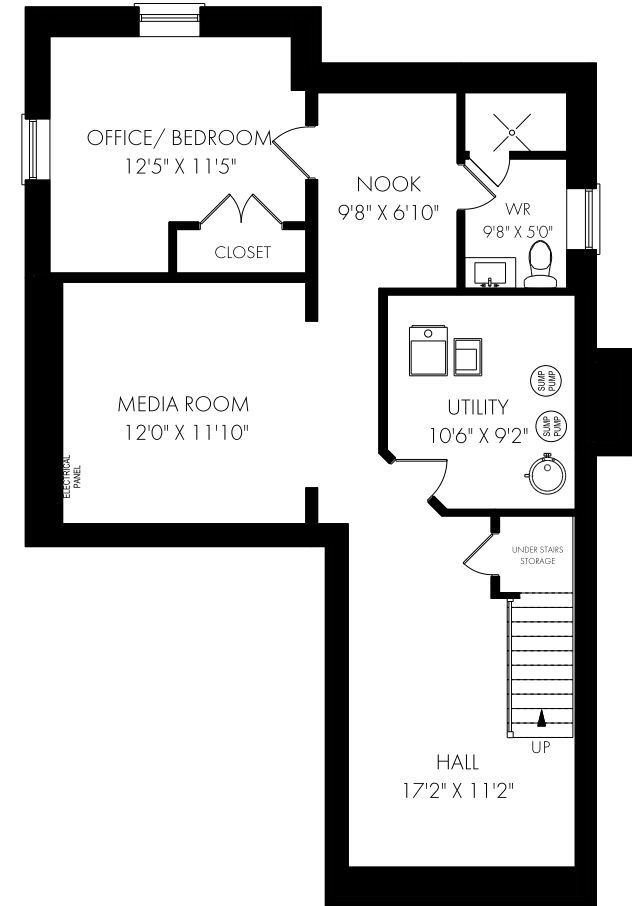
437 Inglehart Street N, Oakville



MAIN FLOOR - 938 SQUARE FEET



SECOND FLOOR - 1198 SQUARE FEET



LOWER LEVEL - 938 SQUARE FEET



NOTE: MEASUREMENTS & AREA ARE APPROXIMATE. PROVIDED AS GUIDELINE ONLY.