

KIMBERLY PHINNEY

CEO/ President/ Sales Representative

416.562.3777

1.877.822.6900

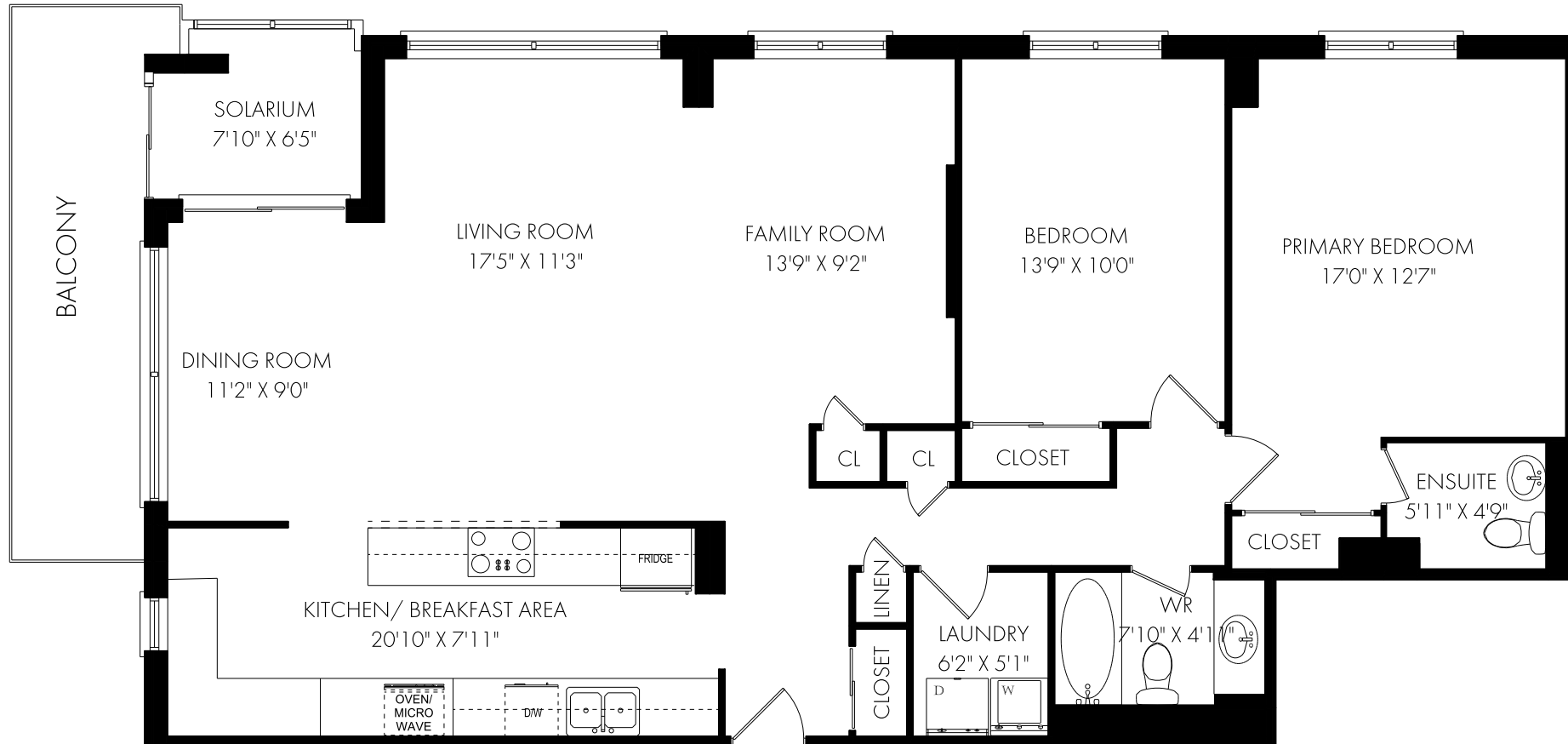
PHINNEYREALESTATE.COM



PHINNEY
REAL ESTATE

FLOOR PLANS

39 Stavebank Road #604, Mississauga



SUITE 604 - APPROX. 1333 SQUARE FEET

PLUS 53 SQ.FT. SOLARIUM &
107 SQ.FT BALCONY



NOTE: MEASUREMENTS & AREA ARE APPROXIMATE. PROVIDED AS GUIDELINE ONLY.