

MICHAEL PHINNEY

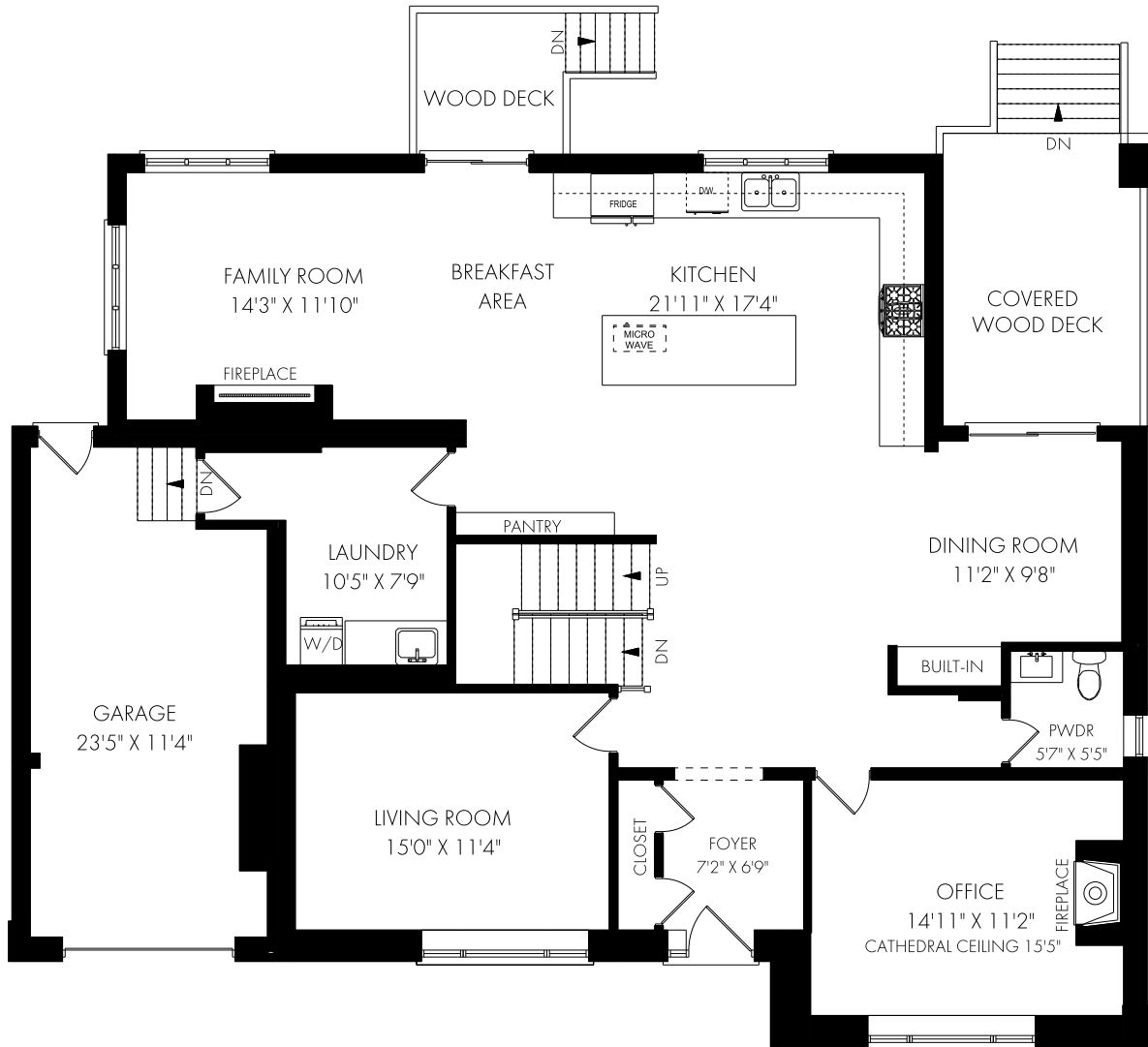
CEO/ President/ Sales Representative
905.617.4669
1.877.822.6900
PHINNEYREALESTATE.COM



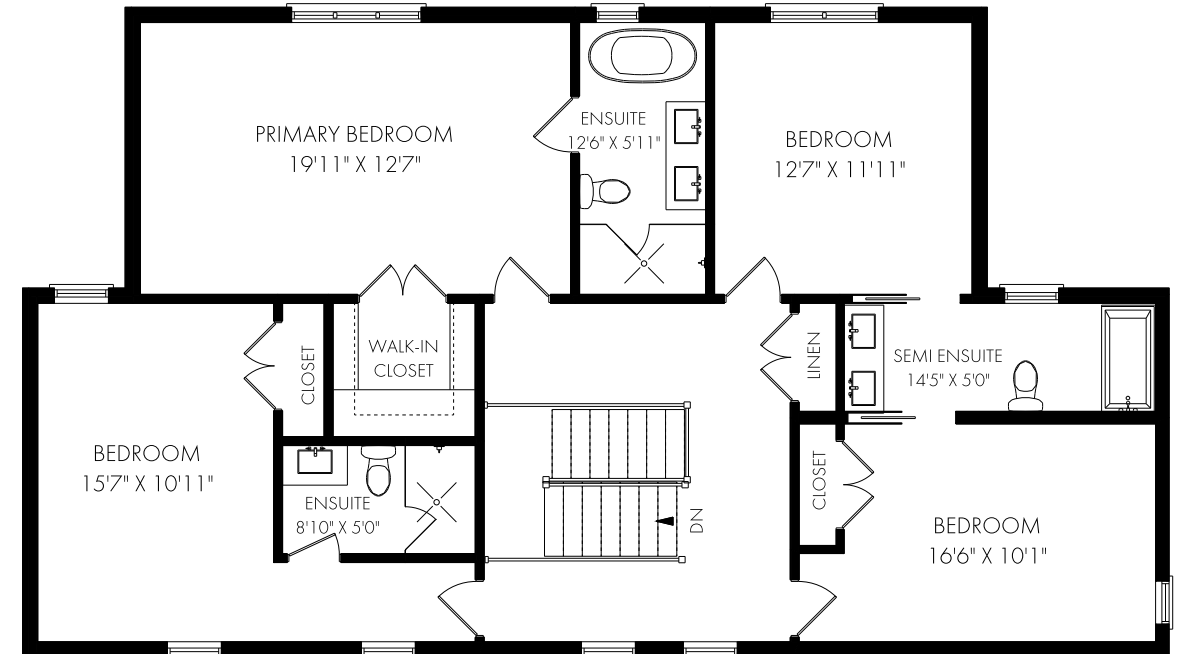
PHINNEY
REAL ESTATE

FLOOR PLANS

527 Oneida Drive, Burlington



CEILING HEIGHT 9'0"
MAIN FLOOR - 1689 SQUARE FEET



SECOND FLOOR - 1421 SQUARE FEET



NOTE: MEASUREMENTS & AREA ARE APPROXIMATE. PROVIDED AS GUIDELINE ONLY.