

MICHAEL PHINNEY

CEO/ President/ Sales Representative

905.617.4669

1.877.822.6900

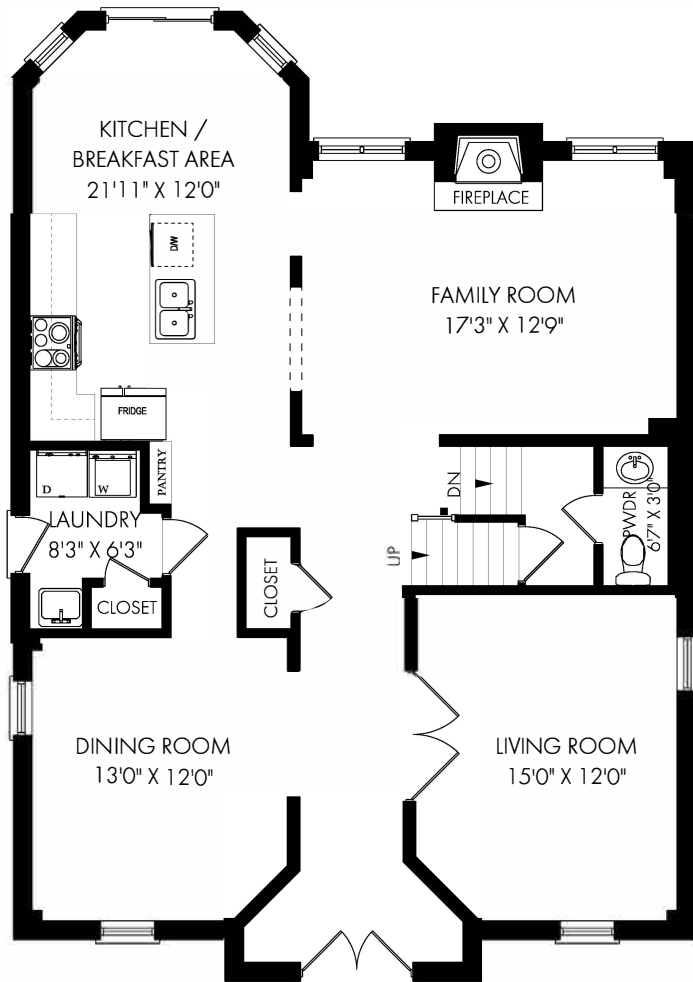
PHINNEYREALESTATE.COM



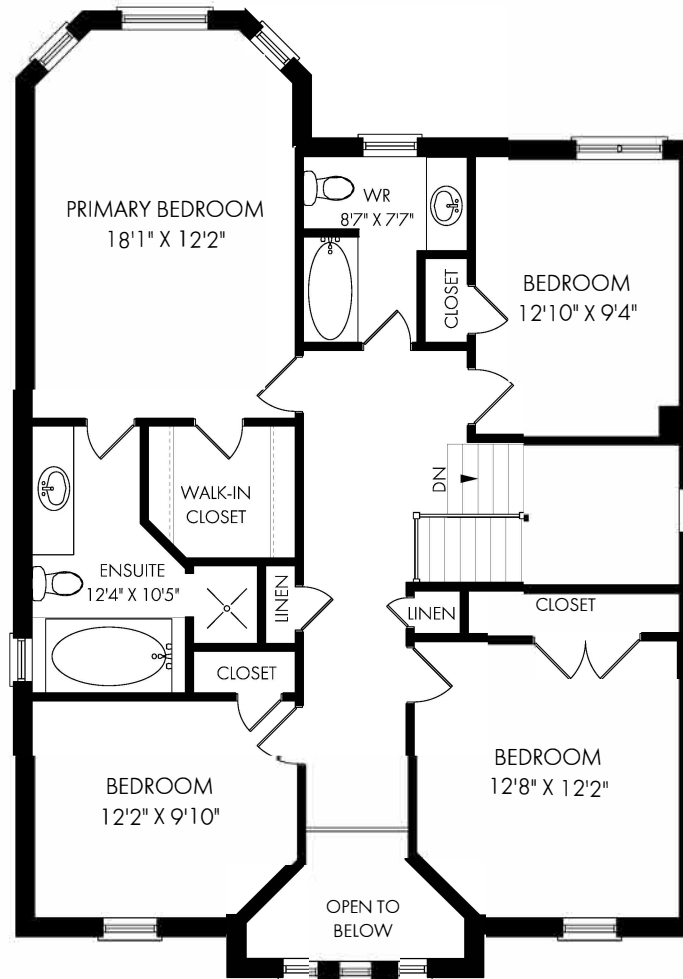
PHINNEY
REAL ESTATE

FLOOR PLANS

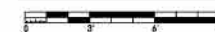
2001 Banbury Crescent, Oakville



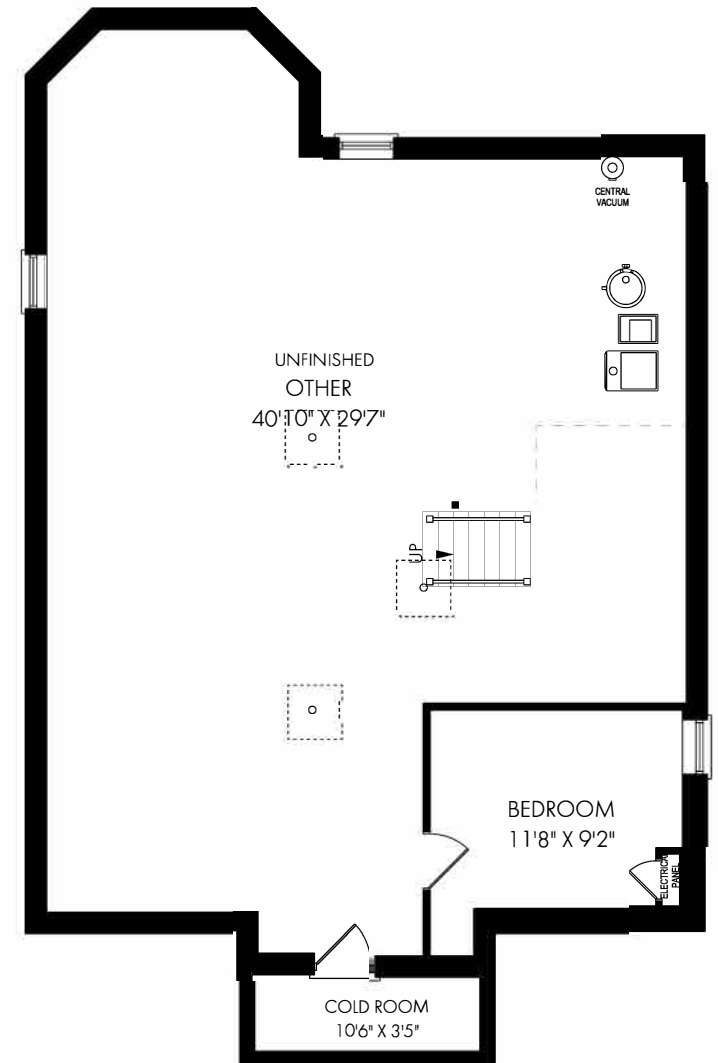
MAIN FLOOR



SECOND FLOOR



AREA EXCLUDES 45 SQ.FT.
OPEN TO BELOW SPACE



LOWER LEVEL



NOTE: MEASUREMENTS & AREA ARE APPROXIMATE. PROVIDED AS GUIDELINE ONLY.