

PAUL DILLON

Sales Representative

416.587.2122

1.877.822.6900

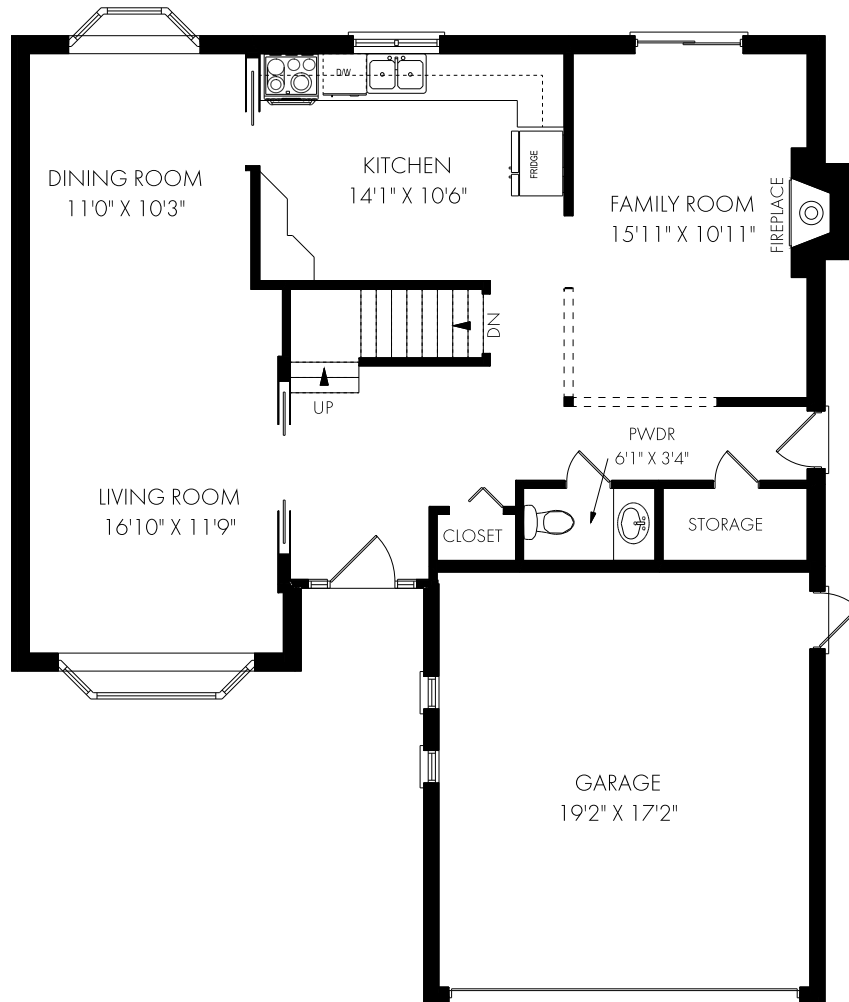
PHINNEYREALESTATE.COM



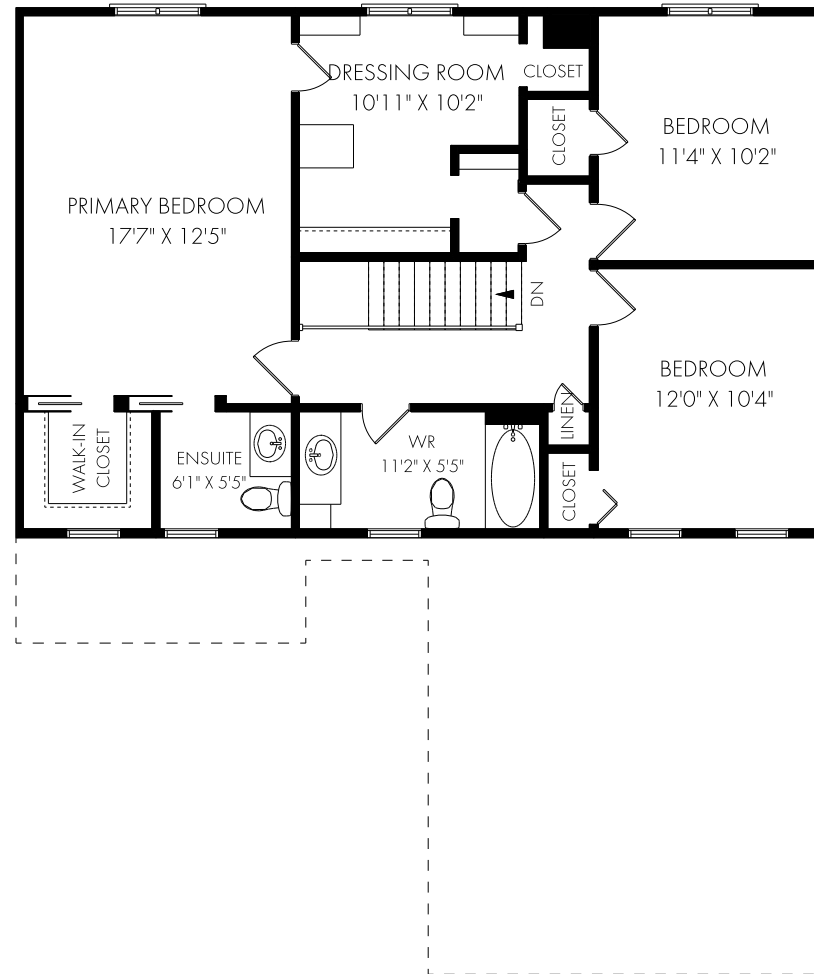
PHINNEY
REAL ESTATE

FLOOR PLANS

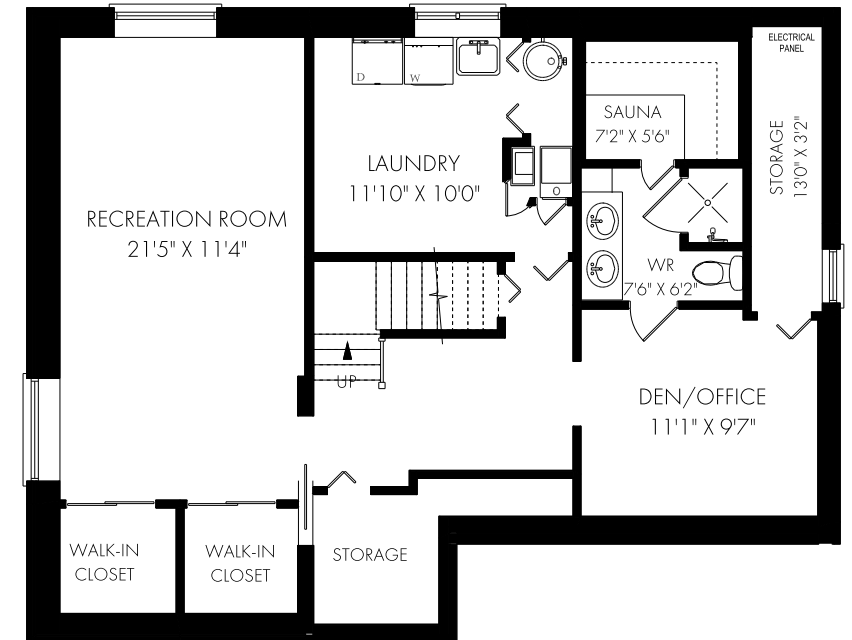
1722 Wedmore Way, Mississauga



MAIN FLOOR - 1002 SQUARE FEET



SECOND FLOOR - 924 SQUARE FEET



LOWER LEVEL - 1027 SQUARE FEET



NOTE: MEASUREMENTS & AREA ARE APPROXIMATE. PROVIDED AS GUIDELINE ONLY.