

KIMBERLY PHINNEY

CEO/ President/ Sales Representative

416.562.3777

1.877.822.6900

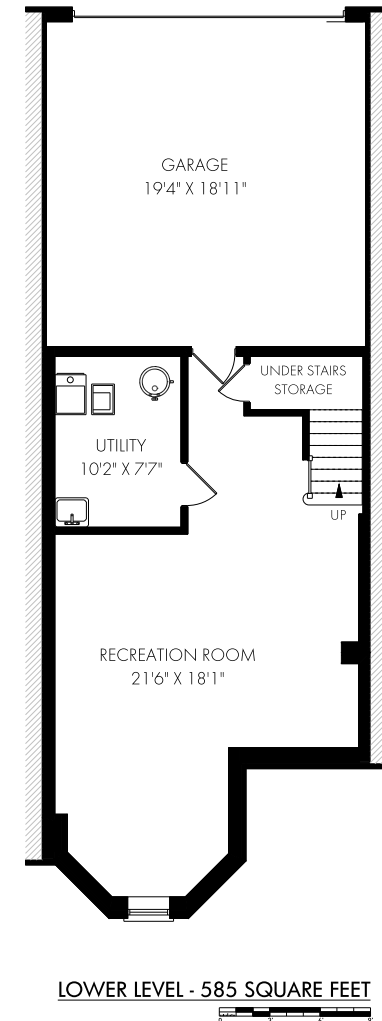
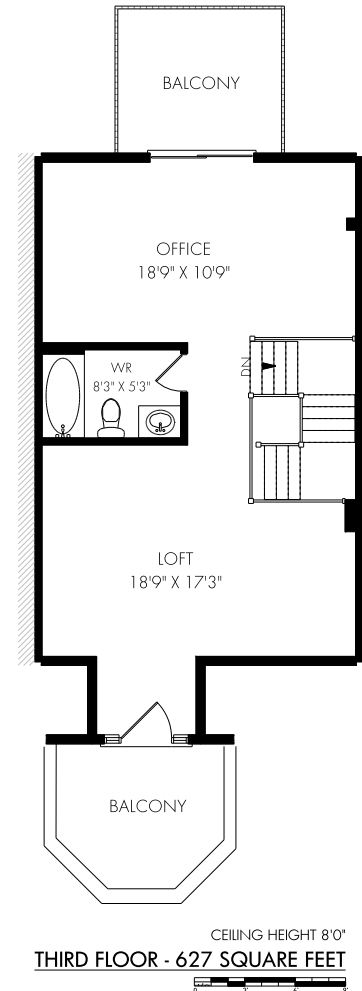
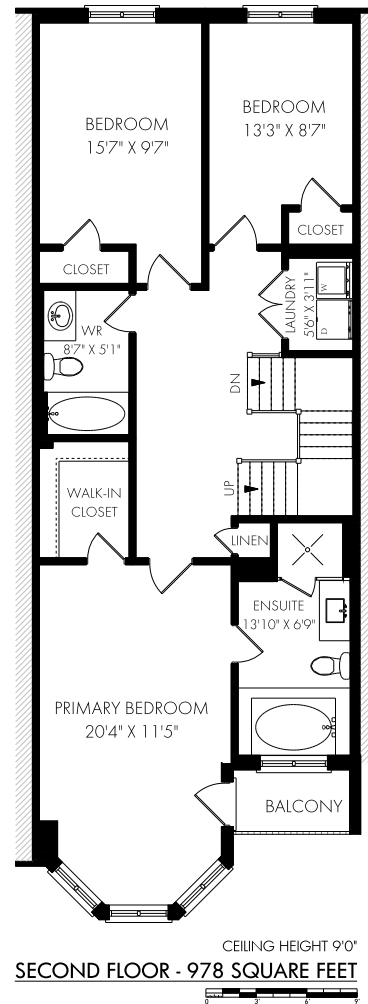
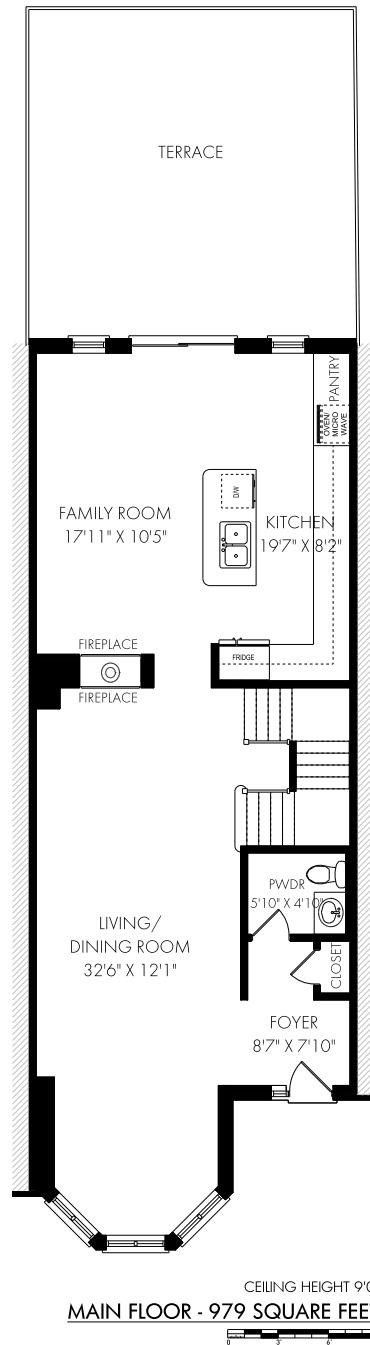
PHINNEYREALESTATE.COM



PHINNEY
REAL ESTATE

FLOOR PLANS

129 St Lawrence Drive, Mississauga



NOTE: MEASUREMENTS & AREA ARE APPROXIMATE. PROVIDED AS GUIDELINE ONLY.