

KIMBERLY PHINNEY

CEO/ President/ Sales Representative

416.562.3777

1.877.822.6900

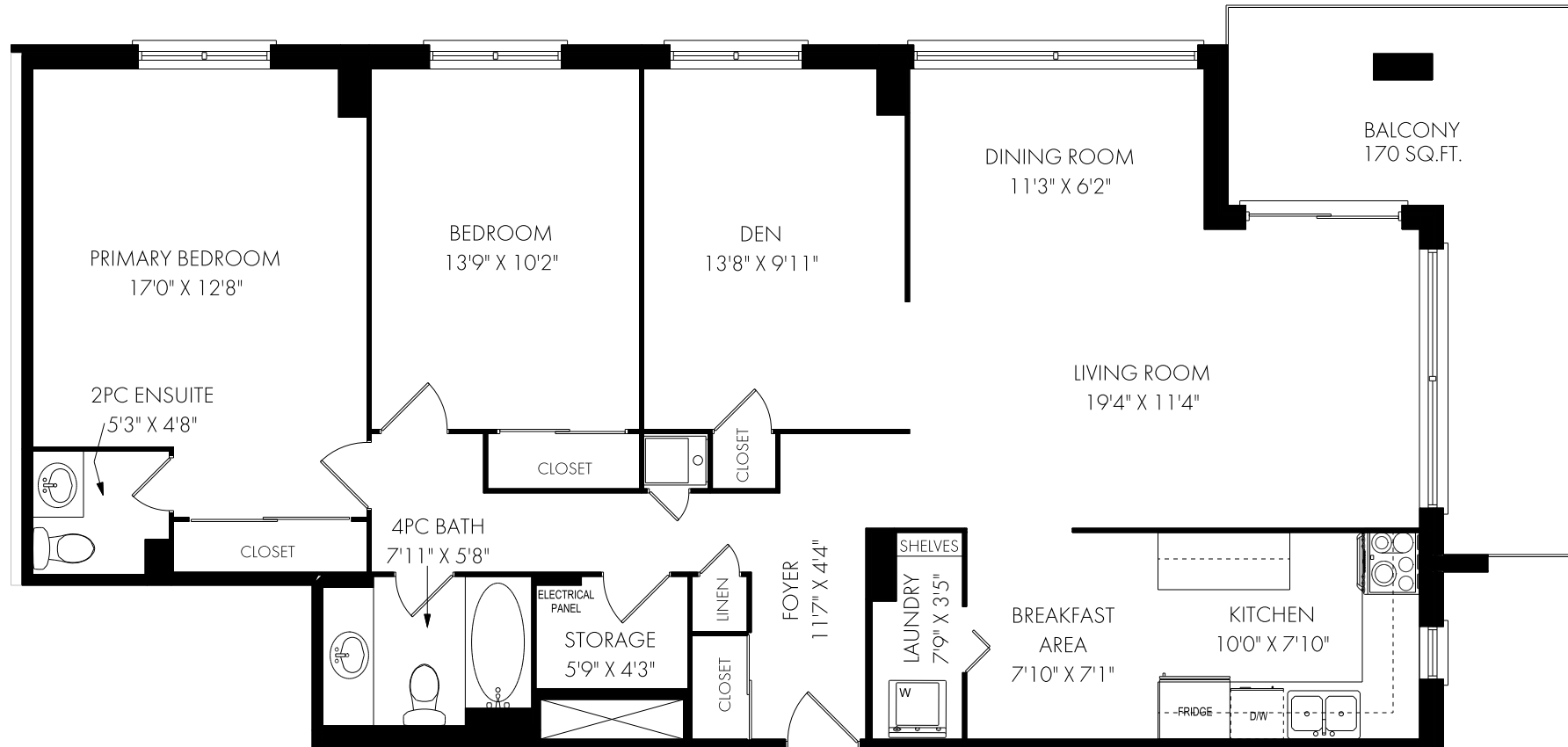
PHINNEYREALESTATE.COM



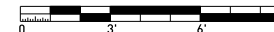
PHINNEY
REAL ESTATE

FLOOR PLANS

301-39 Stavebank Road North, Mississauga



SUITE 301 - APPROX. 1310 SQUARE FEET



NOTE: MEASUREMENTS & AREA ARE APPROXIMATE. PROVIDED AS GUIDELINE ONLY.