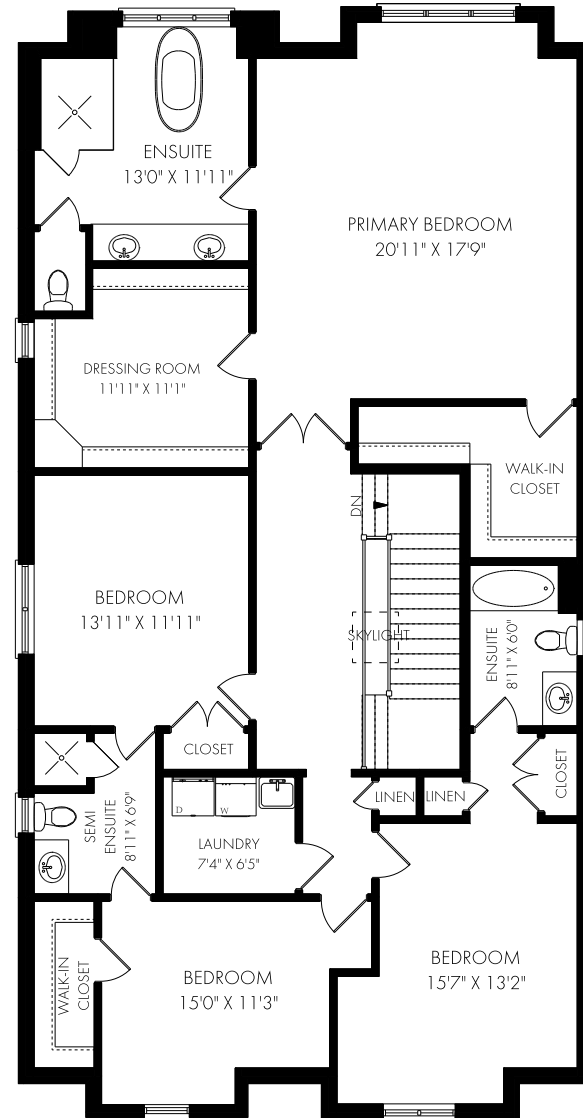
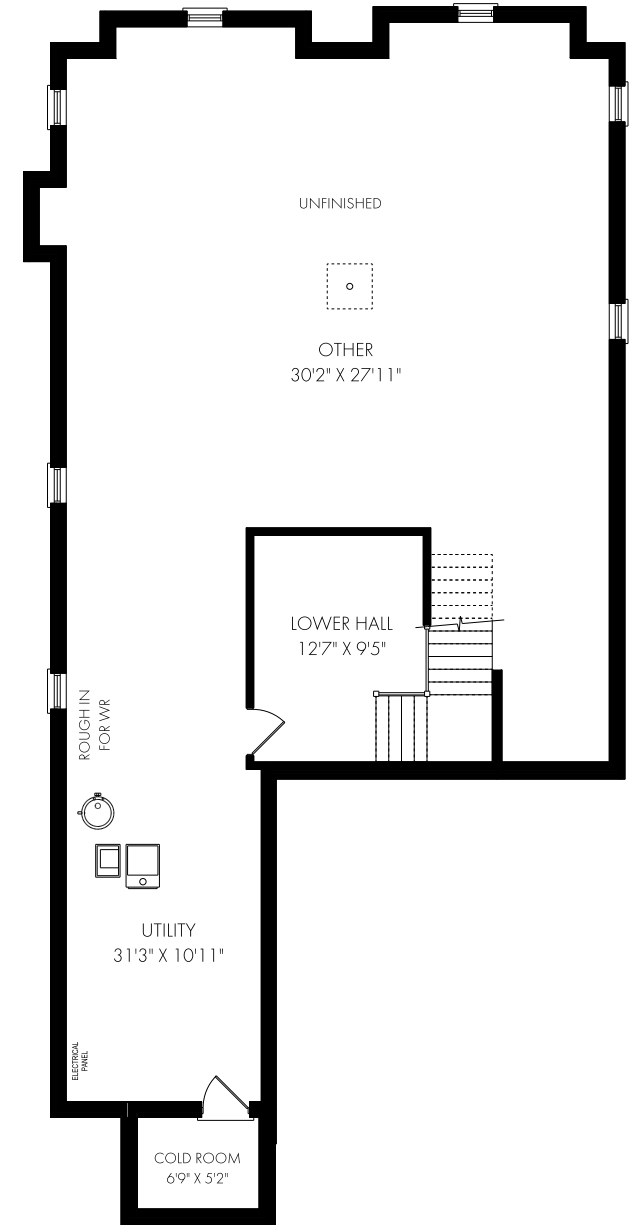


CEILING HEIGHT 10'
MAIN FLOOR - 1586 SQUARE FEET



CEILING HEIGHT 9'0"
SECOND FLOOR - 1929 SQUARE FEET



CEILING HEIGHT 9'2"
LOWER LEVEL - 1645 SQUARE FEET



NOTE: MEASUREMENTS & AREA ARE APPROXIMATE. PROVIDED AS GUIDELINE ONLY.