

**MICHAEL PHINNEY**

CEO/ President/ Sales Representative

905.617.4669

1.877.822.6900

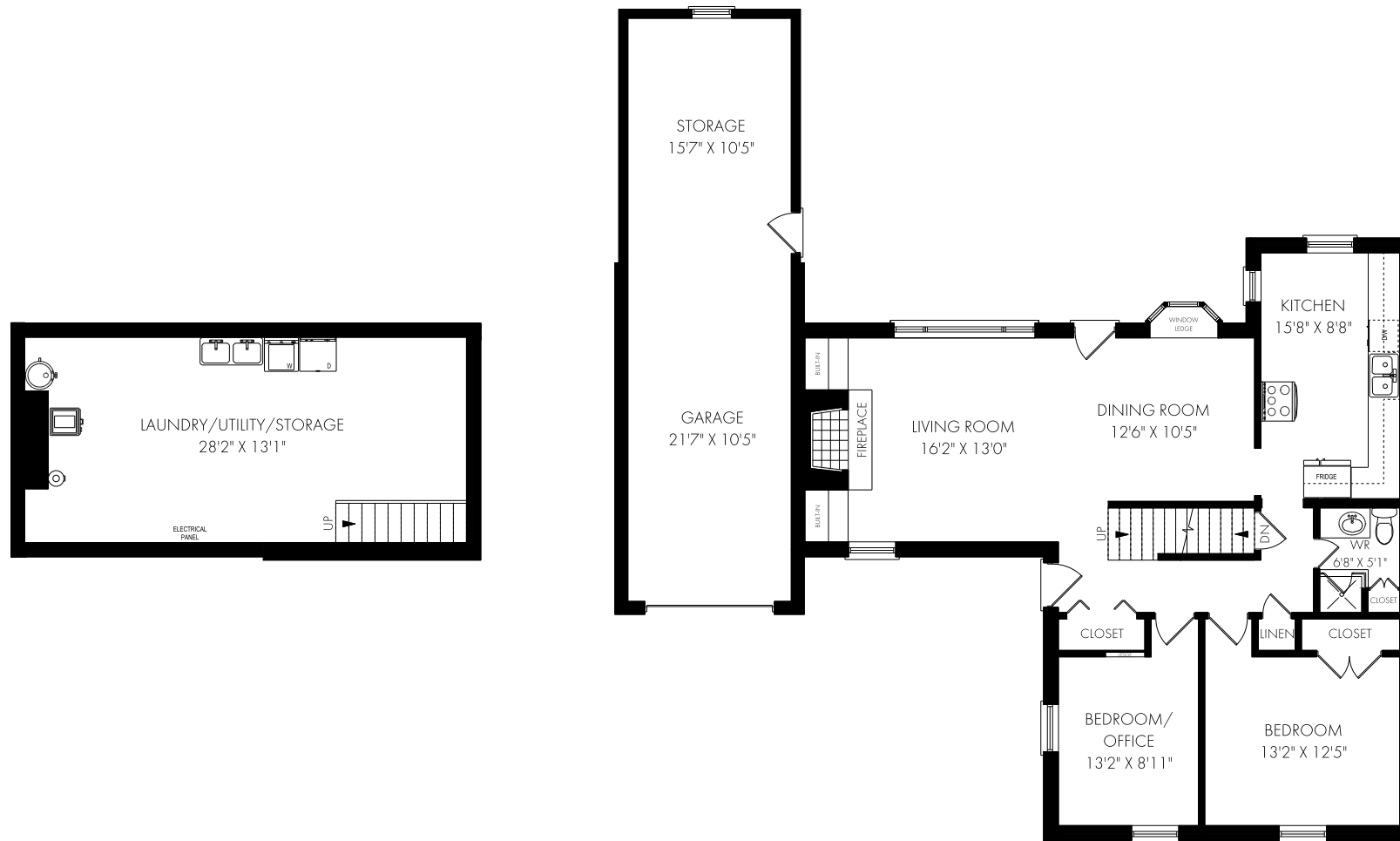
PHINNEYREALESTATE.COM



**PHINNEY**  
REAL ESTATE

# FLOOR PLANS

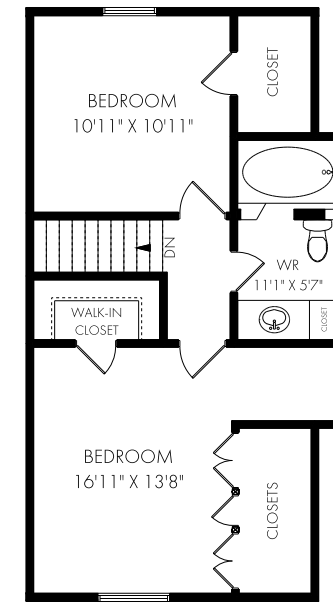
1327 Mineola Gardens, Mississauga



**LOWER LEVEL - 450 SQUARE FEET**



CEILING HEIGHT 8'1"  
**MAIN FLOOR - 1084 SQUARE FEET**



**SECOND FLOOR - 562 SQUARE FEET**

