

MICHAEL PHINNEY

CEO/ President/ Sales Representative

905.617.4669

1.877.822.6900

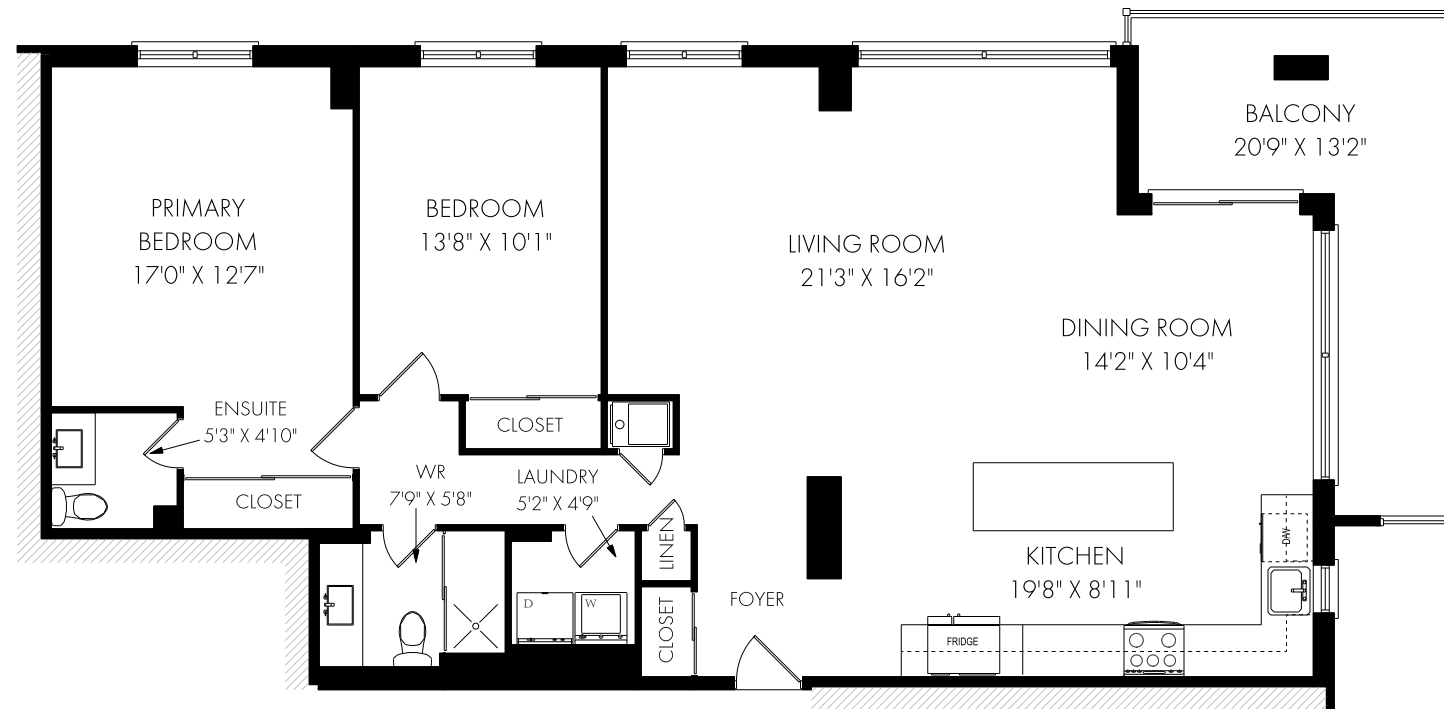
PHINNEYREALESTATE.COM



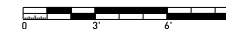
PHINNEY
REAL ESTATE

FLOOR PLANS

801-39 Stavebank Road, Mississauga



SUITE #801 - APPROX. 1322 SQUARE FEET



NOTE: MEASUREMENTS & AREA ARE APPROXIMATE. PROVIDED AS GUIDELINE ONLY.