

MICHAEL PHINNEY

CEO/ President/ Sales Representative

905.617.4669

1.877.822.6900

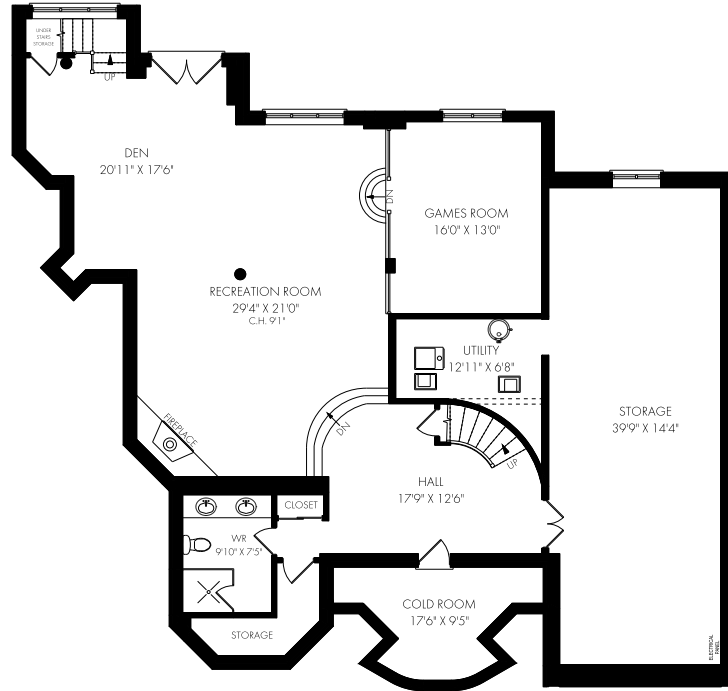
PHINNEYREALESTATE.COM



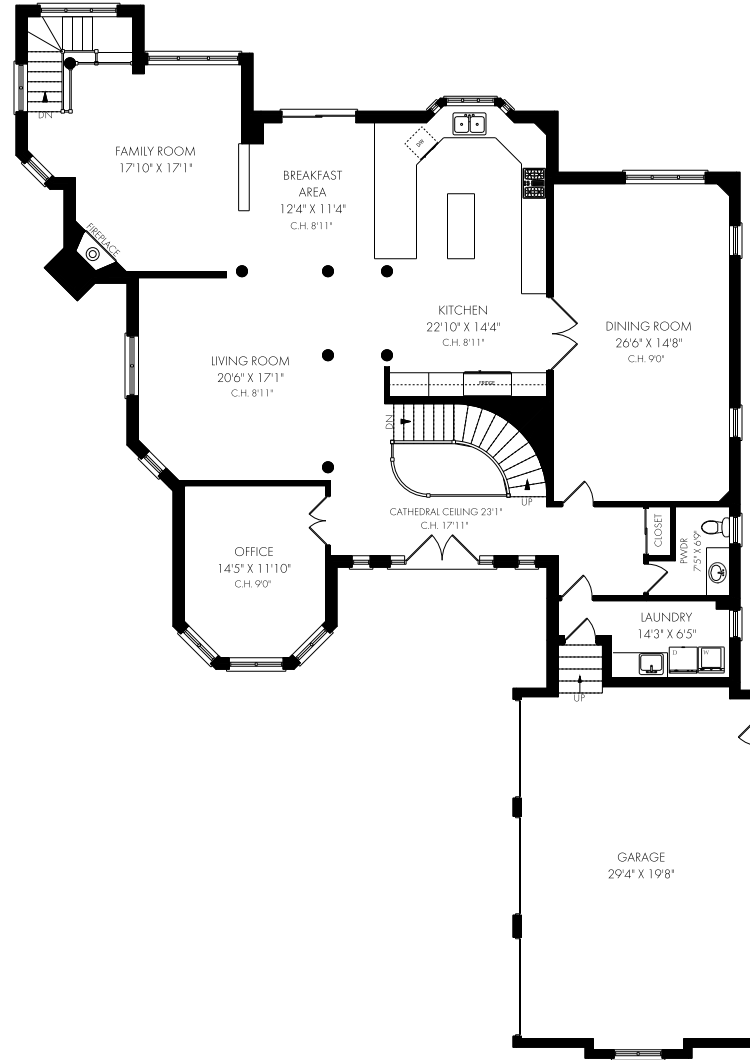
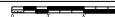
PHINNEY
REAL ESTATE

FLOOR PLANS

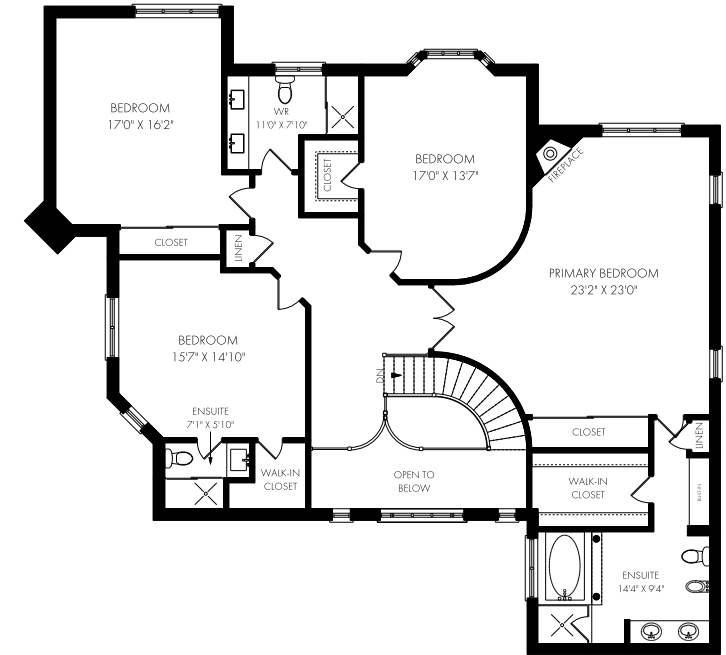
1862 O'Neil Court, Mississauga



LOWER LEVEL - 2470 SQUARE FEET



MAIN FLOOR - 2326 SQUARE FEET



SECOND FLOOR - 2086 SQUARE FEET

AREA EXCLUDES 89 SQ. FT.
OPEN TO BELOW SPACE

NOTE: MEASUREMENTS & AREA ARE APPROXIMATE. PROVIDED AS GUIDELINE ONLY.