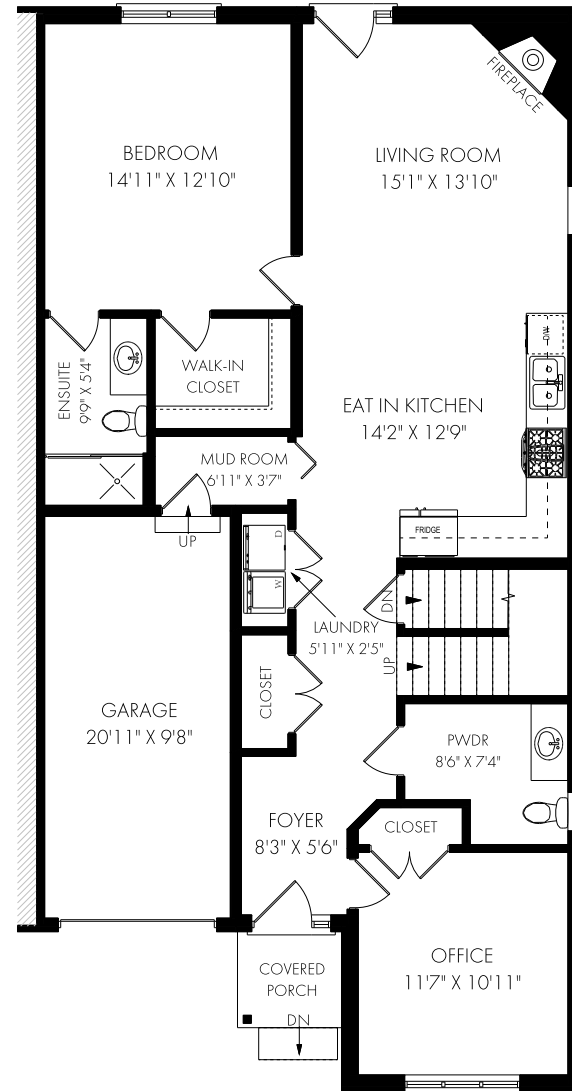
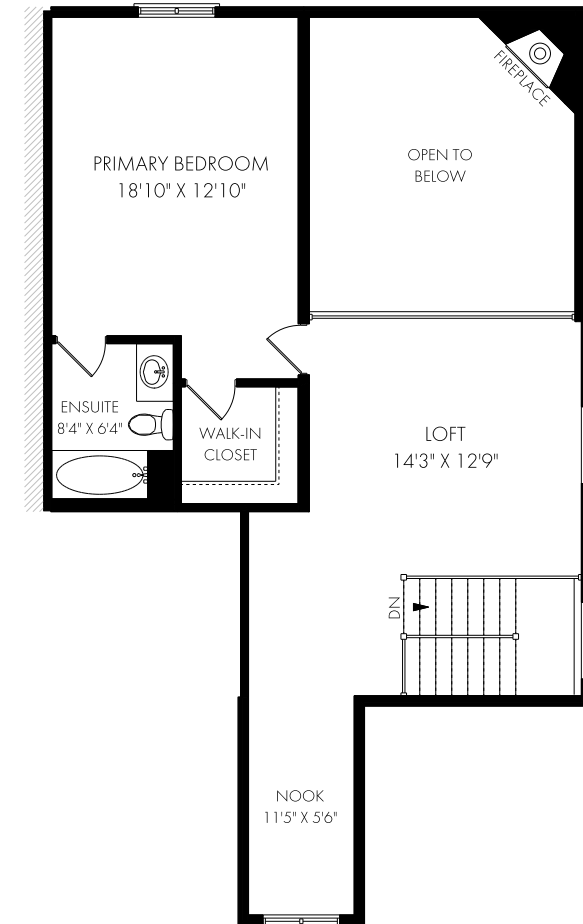
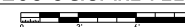


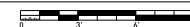
LOWER LEVEL - 1263 SQUARE FEET



CEILING HEIGHT 8'0"
MAIN FLOOR - 1263 SQUARE FEET



CEILING HEIGHT 8'0"
SECOND FLOOR - 798 SQUARE FEET



AREA EXCLUDES 213 SQ. FT.
OPEN TO BELOW SPACE

NOTE: MEASUREMENTS & AREA ARE APPROXIMATE. PROVIDED AS GUIDELINE ONLY.